

# MONTHLY MEMBERSHIP PROGRESS REPORT

LOCATION INDONESIA

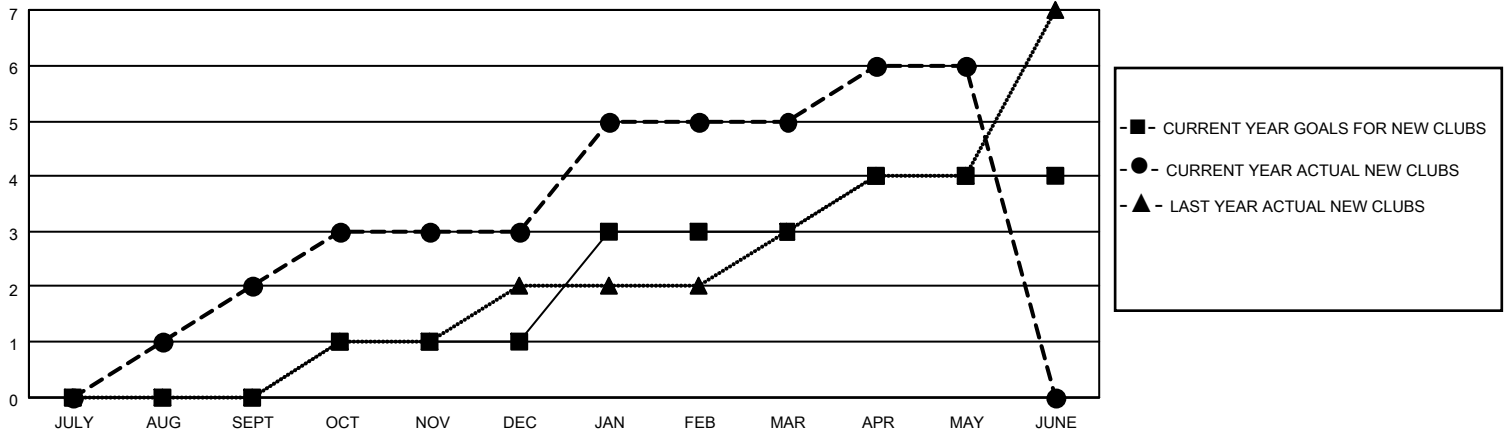
District 307B1

Results as of: 5/31/2021

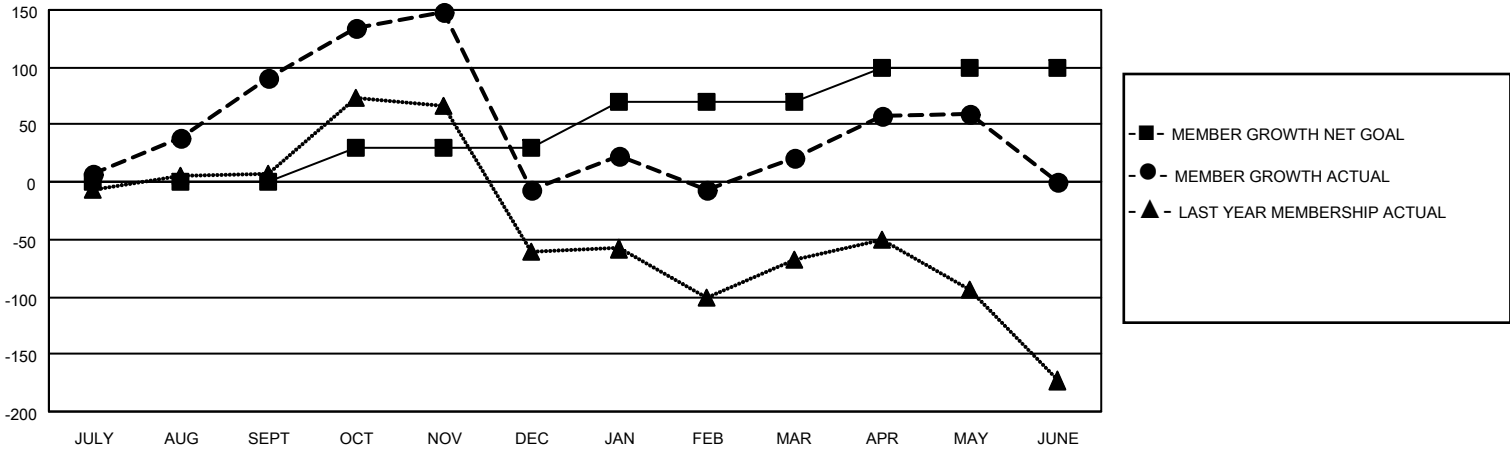
Clubs			
RESULTS FOR 2020-2021			
QUARTER	NEW CLUB GOAL	NEW CLUBS	DROPPED CLUBS
JULY/AUG/SEPT	0	2	2
OCT/NOV/DEC	1	1	0
JAN/FEB/MAR	2	2	8
APR/MAY/JUNE	1	1	0

Members			
RESULTS FOR 2020-2021			
QUARTER	MEMBER GROWTH NET GOAL	MEMBER GROWTH ACTUAL	DROPPED MEMBERS ACTUAL (including transfers)
JULY/AUG/SEPT	0	118	24
OCT/NOV/DEC	30	131	221
JAN/FEB/MAR	40	95	63
APR/MAY/JUNE	30	80	40

**GOALS AND ACTUAL NEW CLUBS CUMULATIVE**



**GOALS AND ACTUAL MEMBERS CUMULATIVE**



**DROPPED CLUBS: 10**

**60 CLUBS OF 87 ADDED 1 OR MORE NEW MEMBERS**

**GENDER DISTRIBUTION**

MALE            651 (35.75%)  
 FEMALE        1,170 (64.25%)

**DROPPED MEMBERS**

[CLICK HERE FOR CUMULATIVE MEMBERSHIP DATA](#)

DECEASED	9
CLUB CANCELLED	56
OTHER	283
<b>TOTAL</b>	<b>348</b>

TOTAL FAMILY UNIT MEMBERS	344
FAMILY MEMBERS PAYING HALF DUES	188